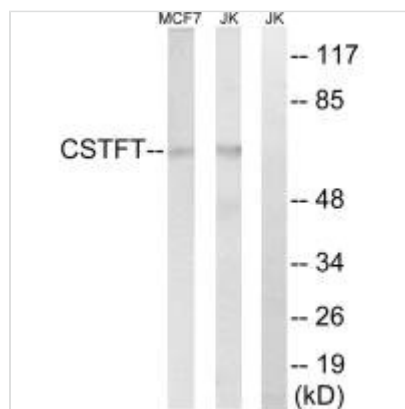




CSTF2T Antibody

| | |
|----------------------------|--|
| Product Code | CSB-PA914370 |
| Storage | Upon receipt, store at -20°C or -80°C. Avoid repeated freeze. |
| Uniprot No. | Q9H0L4 |
| Immunogen | Synthesized peptide derived from internal of Human CSTF2T. |
| Raised In | Rabbit |
| Species Reactivity | Human |
| Specificity | The antibody detects endogenous levels of total CSTF2T protein. |
| Tested Applications | ELISA, WB; WB: 1:500-1:3000 |
| Form | Rabbit IgG in phosphate buffered saline (without Mg ²⁺ and Ca ²⁺), pH 7.4, 150mM NaCl, 0.02% sodium azide and 50% glycerol. |
| Purification Method | The antibody was affinity-purified from rabbit antiserum by affinity-chromatography using epitope-specific immunogen. |
| Clonality | Polyclonal |
| Alias | CF-1 64 kDa subunit; tau variant; cleavage stimulation factor 64 kDa subunit; tau variant; cleavage stimulation factor |
| Product Type | Polyclonal Antibody |
| Immunogen Species | Homo sapiens (Human) |
| Target Names | CSTF2T |

Image



Western blot analysis of extracts from MCF-7 cells and Jurkat cells, using CSTF2T antibody.

Usage

For Research Use Only. Not for use in diagnostic or therapeutic procedures.