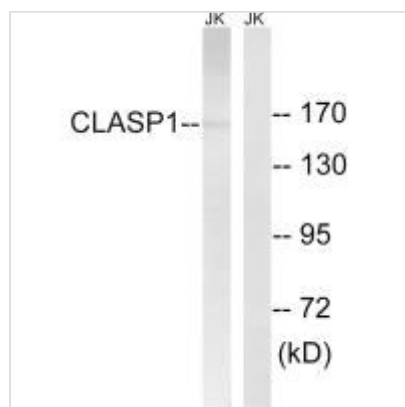




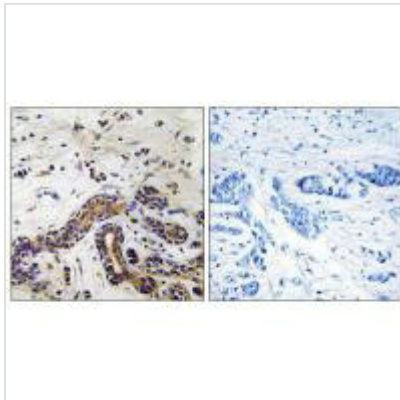
CLASP1 Antibody

Product Code	CSB-PA112941
Storage	Upon receipt, store at -20°C or -80°C. Avoid repeated freeze.
Uniprot No.	Q7Z460
Immunogen	Synthesized peptide derived from internal of Human CLASP1.
Raised In	Rabbit
Species Reactivity	Human
Specificity	The antibody detects endogenous levels of total CLASP1 protein.
Tested Applications	ELISA,WB,IHC;WB:1:500-1:3000,IHC:1:50-1:100
Form	Rabbit IgG in phosphate buffered saline (without Mg ²⁺ and Ca ²⁺), pH 7.4, 150mM NaCl, 0.02% sodium azide and 50% glycerol.
Purification Method	The antibody was affinity-purified from rabbit antiserum by affinity-chromatography using epitope-specific immunogen.
Clonality	Polyclonal
Alias	CLAP1; MAST1; Multiple asters 1;
Product Type	Polyclonal Antibody
Immunogen Species	Homo sapiens (Human)
Target Names	CLASP1

Image



Western blot analysis of extracts from Jurkat cells, using CLASP1 antibody.



Immunohistochemistry analysis of paraffin-embedded human testis tissue, using CLASP1 antibody.