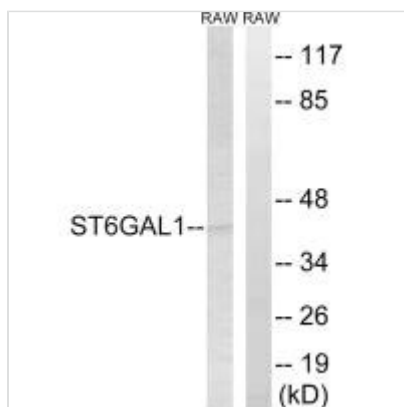




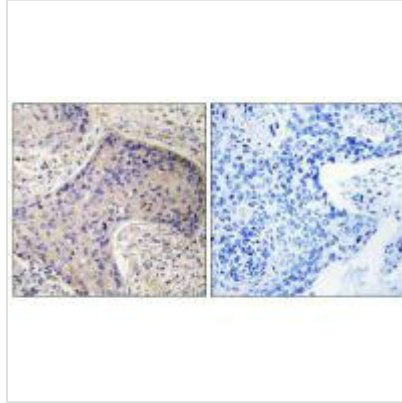
ST6GAL1 Antibody

Product Code	CSB-PA222651
Storage	Upon receipt, store at -20°C or -80°C. Avoid repeated freeze.
Uniprot No.	P15907
Immunogen	Synthesized peptide derived from internal of Human ST6GAL1.
Raised In	Rabbit
Species Reactivity	Human
Specificity	The antibody detects endogenous levels of total ST6GAL1 protein.
Tested Applications	ELISA,WB,IHC;WB:1:500-1:3000,IHC:1:50-1:100
Form	Rabbit IgG in phosphate buffered saline (without Mg ²⁺ and Ca ²⁺), pH 7.4, 150mM NaCl, 0.02% sodium azide and 50% glycerol.
Purification Method	The antibody was affinity-purified from rabbit antiserum by affinity-chromatography using epitope-specific immunogen.
Clonality	Polyclonal
Alias	Alpha 2; 6-ST; B-cell antigen CD75; Beta-galactoside alpha-2; 6-sialyltransferase
Product Type	Polyclonal Antibody
Immunogen Species	Homo sapiens (Human)
Target Names	ST6GAL1

Image



Western blot analysis of extracts from RAW264.7 cells, using ST6GAL1 antibody.



Immunohistochemistry analysis of paraffin-embedded human prostate carcinoma tissue, using ST6GAL1 antibody.

Usage

For Research Use Only. Not for use in diagnostic or therapeutic procedures.