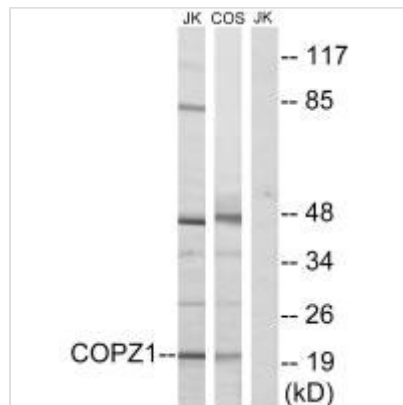




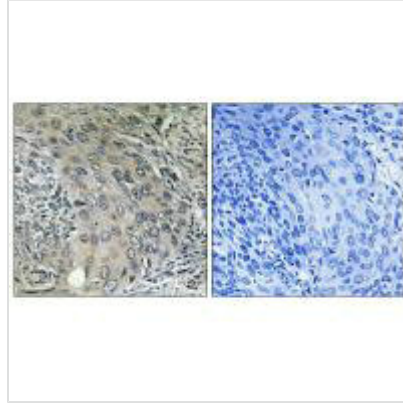
COPZ1 Antibody

Product Code	CSB-PA217102
Storage	Upon receipt, store at -20°C or -80°C. Avoid repeated freeze.
Uniprot No.	P61923
Immunogen	Synthesized peptide derived from internal of Human COPZ1.
Raised In	Rabbit
Species Reactivity	Human,Mouse
Specificity	The antibody detects endogenous levels of total COPZ1 protein.
Tested Applications	ELISA,WB,IHC;WB:1:500-1:3000,IHC:1:50-1:100
Form	Rabbit IgG in phosphate buffered saline (without Mg ²⁺ and Ca ²⁺), pH 7.4, 150mM NaCl, 0.02% sodium azide and 50% glycerol.
Purification Method	The antibody was affinity-purified from rabbit antiserum by affinity-chromatography using epitope-specific immunogen.
Clonality	Polyclonal
Alias	CGI-120; coatomer protein complex; subunit zeta 1; COPZ; zeta1-COP
Product Type	Polyclonal Antibody
Immunogen Species	Homo sapiens (Human)
Target Names	COPZ1

Image



Western blot analysis of extracts from Jurkat cells and COS cells, using COPZ1 antibody.



Immunohistochemistry analysis of paraffin-embedded human cervix carcinoma tissue using COPZ1 antibody.

Usage

For Research Use Only. Not for use in diagnostic or therapeutic procedures.