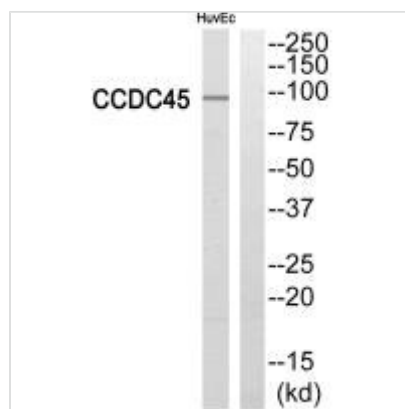




CEP95 Antibody

Product Code	CSB-PA898283
Storage	Upon receipt, store at -20°C or -80°C. Avoid repeated freeze.
Uniprot No.	Q96GE4
Immunogen	Synthesized peptide derived from internal of Human CCDC45.
Raised In	Rabbit
Species Reactivity	Human
Specificity	The antibody detects endogenous levels of total CCDC45 protein.
Tested Applications	ELISA, WB; WB: 1:500-1:3000
Form	Rabbit IgG in phosphate buffered saline (without Mg ²⁺ and Ca ²⁺), pH 7.4, 150mM NaCl, 0.02% sodium azide and 50% glycerol.
Purification Method	The antibody was affinity-purified from rabbit antiserum by affinity-chromatography using epitope-specific immunogen.
Clonality	Polyclonal
Alias	Coiled-coil domain-containing protein 45;
Product Type	Polyclonal Antibody
Immunogen Species	Homo sapiens (Human)
Target Names	CEP95

Image



Western blot analysis of extracts from HuvEc cells, using CCDC45 antibody.

Usage For Research Use Only. Not for use in diagnostic or therapeutic procedures.