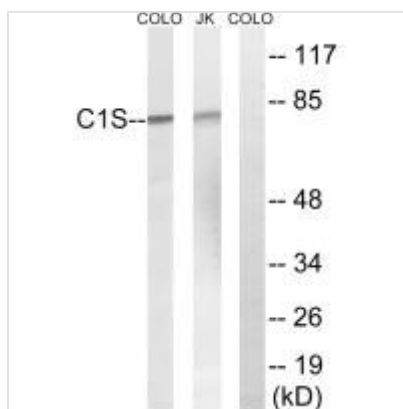




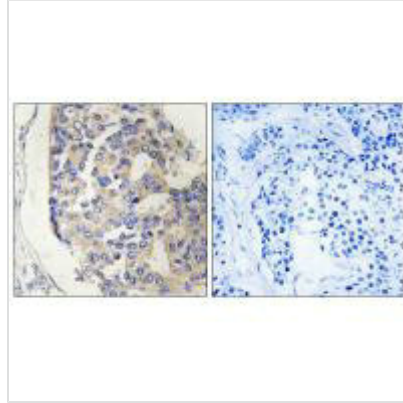
C1S Antibody

Product Code	CSB-PA145542
Storage	Upon receipt, store at -20°C or -80°C. Avoid repeated freeze.
Uniprot No.	P09871
Immunogen	Synthesized peptide derived from internal of Human C1S.
Raised In	Rabbit
Species Reactivity	Human
Specificity	The antibody detects endogenous levels of total C1S protein.
Tested Applications	ELISA,WB,IHC;WB:1:500-1:3000,IHC:1:50-1:100
Form	Rabbit IgG in phosphate buffered saline (without Mg ²⁺ and Ca ²⁺), pH 7.4, 150mM NaCl, 0.02% sodium azide and 50% glycerol.
Purification Method	The antibody was affinity-purified from rabbit antiserum by affinity-chromatography using epitope-specific immunogen.
Clonality	Polyclonal
Alias	28S ribosomal protein S7; mitochondrial; S7mt; MRP-S7; bMRP27a
Product Type	Polyclonal Antibody
Immunogen Species	Homo sapiens (Human)
Target Names	C1S

Image



Western blot analysis of extracts from Jurkat cells and COLO cells, using C1S antibody.



Immunohistochemistry analysis of paraffin-embedded human breast carcinoma tissue, using C1S antibody.

Usage

For Research Use Only. Not for use in diagnostic or therapeutic procedures.