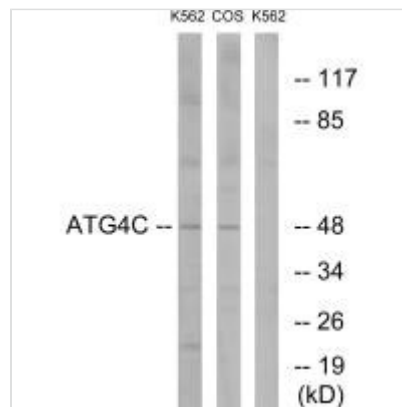




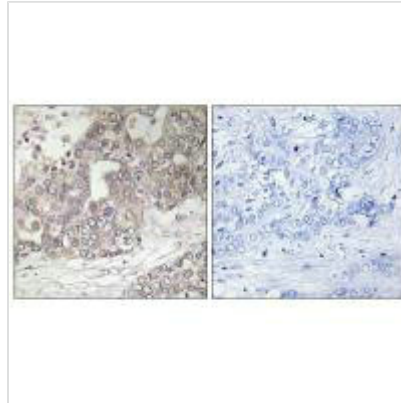
ATG4C Antibody

Product Code	CSB-PA097577
Storage	Upon receipt, store at -20°C or -80°C. Avoid repeated freeze.
Uniprot No.	Q96DT6
Immunogen	Synthesized peptide derived from internal of Human ATG4C.
Raised In	Rabbit
Species Reactivity	Human, Mouse
Specificity	The antibody detects endogenous levels of total ATG4C protein.
Tested Applications	ELISA, WB, IHC, IF; WB: 1:500-1:3000, IHC: 1:50-1:100, IF: 1:100-1:500
Form	Rabbit IgG in phosphate buffered saline (without Mg ²⁺ and Ca ²⁺), pH 7.4, 150mM NaCl, 0.02% sodium azide and 50% glycerol.
Purification Method	The antibody was affinity-purified from rabbit antiserum by affinity-chromatography using epitope-specific immunogen.
Clonality	Polyclonal
Alias	APG4 autophagy 4 homolog C; APG4-C; APG4C; AUT-like 3 cysteine endopeptidase; AUTL1
Product Type	Polyclonal Antibody
Immunogen Species	Homo sapiens (Human)
Target Names	ATG4C

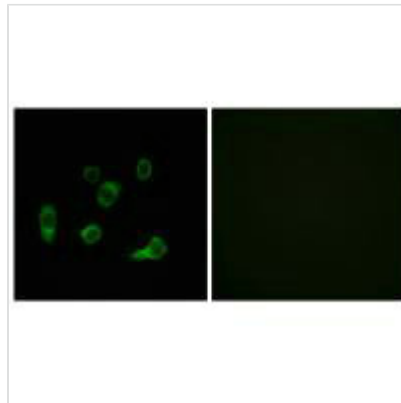
Image



Western blot analysis of extracts from K562 cells and COS7 cells, using ATG4C antibody.



Immunohistochemistry analysis of paraffin-embedded human liver carcinoma tissue using ATG4C antibody.



Immunofluorescence analysis of HuvEc cells, using ATG4C antibody.

Usage

For Research Use Only. Not for use in diagnostic or therapeutic procedures.