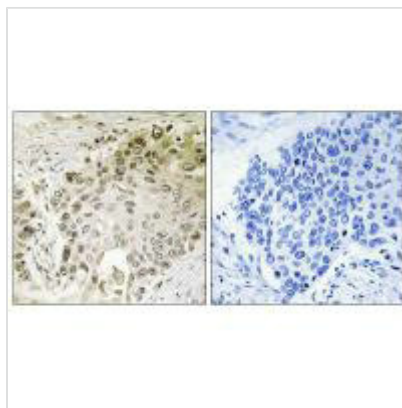




RFX2 Antibody

Product Code	CSB-PA066707
Storage	Upon receipt, store at -20°C or -80°C. Avoid repeated freeze.
Uniprot No.	P48378
Immunogen	Synthesized peptide derived from internal of Human RFX2.
Raised In	Rabbit
Species Reactivity	Human
Specificity	The antibody detects endogenous levels of total RFX2 protein.
Tested Applications	ELISA,IHC;IHC:1:50-1:100
Form	Rabbit IgG in phosphate buffered saline (without Mg ²⁺ and Ca ²⁺), pH 7.4, 150mM NaCl, 0.02% sodium azide and 50% glycerol.
Purification Method	The antibody was affinity-purified from rabbit antiserum by affinity-chromatography using epitope-specific immunogen.
Clonality	Polyclonal
Alias	DNA-binding protein RFX2; Regulatory factor X 2;
Product Type	Polyclonal Antibody
Immunogen Species	Homo sapiens (Human)
Target Names	RFX2

Image



Immunohistochemistry analysis of paraffin-embedded human lung carcinoma tissue using RFX2 antibody.