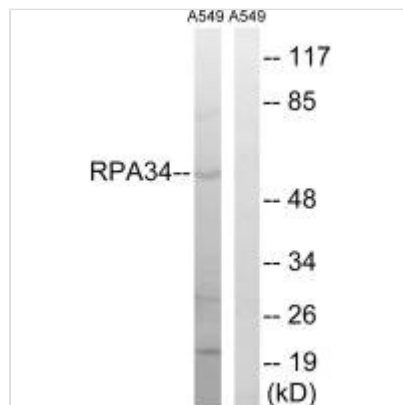




CD3EAP Antibody

Product Code	CSB-PA951496
Storage	Upon receipt, store at -20°C or -80°C. Avoid repeated freeze.
Uniprot No.	O15446
Immunogen	Synthesized peptide derived from internal of Human CD3EAP.
Raised In	Rabbit
Species Reactivity	Human
Specificity	The antibody detects endogenous levels of total CD3EAP protein.
Tested Applications	ELISA, WB; WB: 1:500-1:3000
Form	Rabbit IgG in phosphate buffered saline (without Mg ²⁺ and Ca ²⁺), pH 7.4, 150mM NaCl, 0.02% sodium azide and 50% glycerol.
Purification Method	The antibody was affinity-purified from rabbit antiserum by affinity-chromatography using epitope-specific immunogen.
Clonality	Polyclonal
Alias	antisense to ERCC-1; CAST; CD3-epsilon-associated protein; CD3e-associated protein; CD3EAP
Product Type	Polyclonal Antibody
Immunogen Species	Homo sapiens (Human)
Target Names	CD3EAP

Image



Western blot analysis of extracts from A549 cells, using CD3EAP antibody.