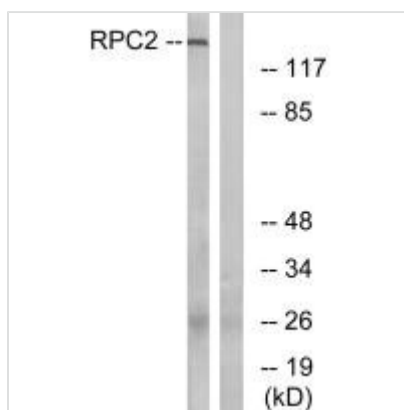




POLR3B Antibody

Product Code	CSB-PA592018
Storage	Upon receipt, store at -20°C or -80°C. Avoid repeated freeze.
Uniprot No.	Q9NW08
Immunogen	Synthesized peptide derived from internal of Human RPC2.
Raised In	Rabbit
Species Reactivity	Human, Mouse
Specificity	The antibody detects endogenous levels of total RPC2 protein.
Tested Applications	ELISA, WB; WB: 1:500-1:3000
Form	Rabbit IgG in phosphate buffered saline (without Mg ²⁺ and Ca ²⁺), pH 7.4, 150mM NaCl, 0.02% sodium azide and 50% glycerol.
Purification Method	The antibody was affinity-purified from rabbit antiserum by affinity-chromatography using epitope-specific immunogen.
Clonality	Polyclonal
Alias	DNA-directed RNA polymerase III subunit 127.6 kDa polypeptide; EC 2.7.7.6; polymerase (RNA) III (DNA directed) polypeptide B; RNA polymerase III subunit 2; RNA polymerase III subunit RPC2
Product Type	Polyclonal Antibody
Immunogen Species	Homo sapiens (Human)
Target Names	POLR3B

Image



Western blot analysis of extracts from LOVO cells, using RPC2 antibody.

Usage For Research Use Only. Not for use in diagnostic or therapeutic procedures.