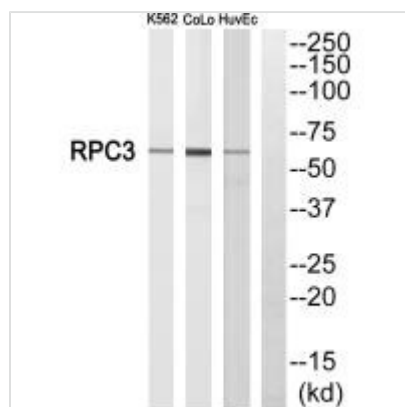




POLR3C Antibody

Product Code	CSB-PA097153
Storage	Upon receipt, store at -20°C or -80°C. Avoid repeated freeze.
Uniprot No.	Q9BUI4
Immunogen	Synthesized peptide derived from internal of Human RPC3.
Raised In	Rabbit
Species Reactivity	Human
Specificity	The antibody detects endogenous levels of total RPC3 protein.
Tested Applications	ELISA, WB; WB: 1:500-1:3000
Form	Rabbit IgG in phosphate buffered saline (without Mg ²⁺ and Ca ²⁺), pH 7.4, 150mM NaCl, 0.02% sodium azide and 50% glycerol.
Purification Method	The antibody was affinity-purified from rabbit antiserum by affinity-chromatography using epitope-specific immunogen.
Clonality	Polyclonal
Alias	DNA-directed RNA polymerase III subunit RPC3; RNA polymerase III subunit C3; DNA-directed RNA polymerase III subunit C; DNA-directed III 62 kDa polypeptide; RPC62
Product Type	Polyclonal Antibody
Immunogen Species	Homo sapiens (Human)
Target Names	POLR3C

Image



Western blot analysis of extracts from K562 cells, CoLo205 cells and HuvEc cells, using RPC3 antibody.

Usage For Research Use Only. Not for use in diagnostic or therapeutic procedures.