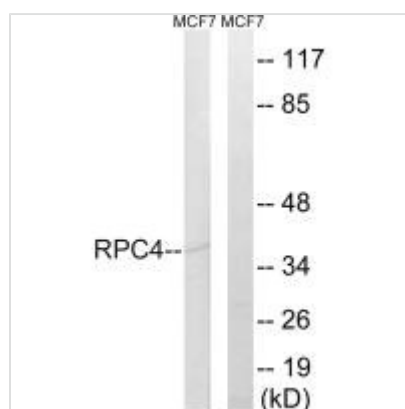




POLR3D Antibody

Product Code	CSB-PA220762
Storage	Upon receipt, store at -20°C or -80°C. Avoid repeated freeze.
Uniprot No.	P05423
Immunogen	Synthesized peptide derived from internal of Human RPC4.
Raised In	Rabbit
Species Reactivity	Human
Specificity	The antibody detects endogenous levels of total RPC4 protein.
Tested Applications	ELISA, WB; WB: 1:500-1:3000
Form	Rabbit IgG in phosphate buffered saline (without Mg ²⁺ and Ca ²⁺), pH 7.4, 150mM NaCl, 0.02% sodium azide and 50% glycerol.
Purification Method	The antibody was affinity-purified from rabbit antiserum by affinity-chromatography using epitope-specific immunogen.
Clonality	Polyclonal
Alias	DNA-directed RNA polymerase III subunit RPC4; RNA polymerase III subunit C4; DNA-directed RNA polymerase III subunit D; DNA-directed RNA polymerase III 47 kDa polypeptide; RPC53
Product Type	Polyclonal Antibody
Immunogen Species	Homo sapiens (Human)
Target Names	POLR3D

Image



Western blot analysis of extracts from MCF-7 cells, using RPC4 antibody.