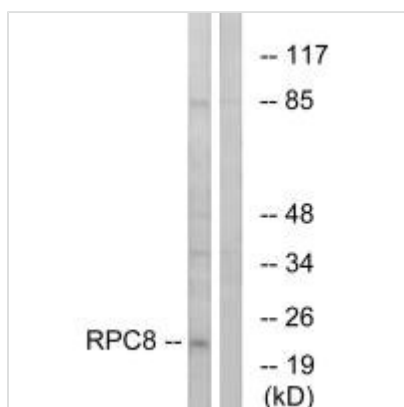




POLR3H Antibody

Product Code	CSB-PA136237
Storage	Upon receipt, store at -20°C or -80°C. Avoid repeated freeze.
Uniprot No.	Q9Y535
Immunogen	Synthesized peptide derived from internal of Human RPC8.
Raised In	Rabbit
Species Reactivity	Human,Mouse,Rat
Specificity	The antibody detects endogenous levels of total RPC8 protein.
Tested Applications	ELISA,WB;WB:1:500-1:3000
Form	Rabbit IgG in phosphate buffered saline (without Mg ²⁺ and Ca ²⁺), pH 7.4, 150mM NaCl, 0.02% sodium azide and 50% glycerol.
Purification Method	The antibody was affinity-purified from rabbit antiserum by affinity-chromatography using epitope-specific immunogen.
Clonality	Polyclonal
Alias	DNA-directed RNA polymerase III subunit RPC8; RNA polymerase III subunit C8; DNA-directed RNA polymerase III subunit H; DNA-directed RNA polymerase III subunit 22.9 kDa polypeptide; POLR3H
Product Type	Polyclonal Antibody
Immunogen Species	Homo sapiens (Human)
Target Names	POLR3H

Image



Western blot analysis of extracts from K562 cells, using RPC8 antibody.

Usage For Research Use Only. Not for use in diagnostic or therapeutic procedures.