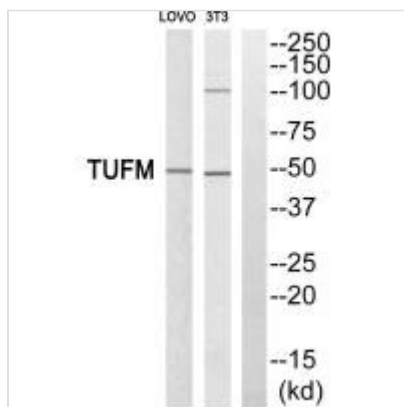




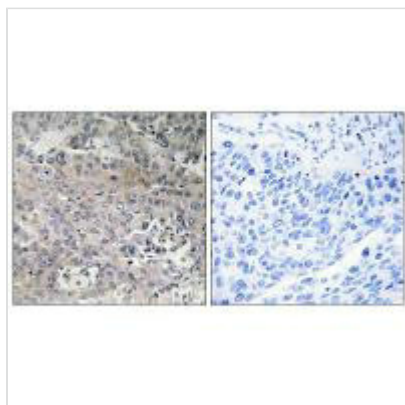
# TUFM Antibody

<b>Product Code</b>	CSB-PA559509
<b>Storage</b>	Upon receipt, store at -20°C or -80°C. Avoid repeated freeze.
<b>Uniprot No.</b>	P49411
<b>Immunogen</b>	Synthesized peptide derived from internal of Human TUFM.
<b>Raised In</b>	Rabbit
<b>Species Reactivity</b>	Human, Mouse
<b>Specificity</b>	The antibody detects endogenous levels of total TUFM protein.
<b>Tested Applications</b>	ELISA, WB, IHC; WB: 1:500-1:3000, IHC: 1:50-1:100
<b>Purification Method</b>	The antibody was affinity-purified from rabbit antiserum by affinity-chromatography using epitope-specific immunogen.
<b>Clonality</b>	Polyclonal
<b>Alias</b>	Elongation factor Tu; mitochondrial; EF-Tu; P43;
<b>Product Type</b>	Polyclonal Antibody
<b>Immunogen Species</b>	Homo sapiens (Human)
<b>Target Names</b>	TUFM

## Image



Western blot analysis of extracts from LOVO cells and 3T3 cells, using TUFM antibody.



Immunohistochemistry analysis of paraffin-embedded human lung carcinoma tissue using TUFM antibody.



---

**Usage**

For Research Use Only. Not for use in diagnostic or therapeutic procedures.