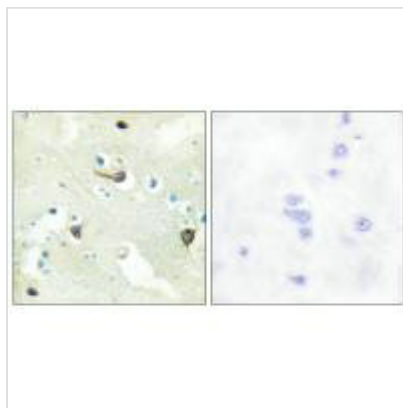




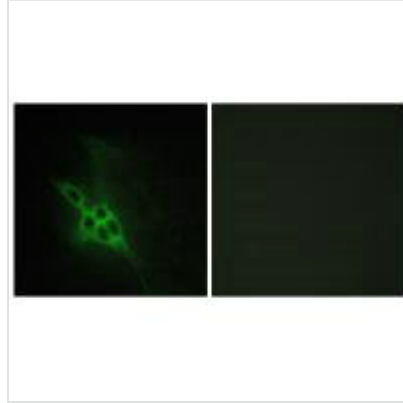
# EPHB1/EPHB2/EPHB3 Antibody

<b>Product Code</b>	CSB-PA106334
<b>Storage</b>	Upon receipt, store at -20°C or -80°C. Avoid repeated freeze.
<b>Uniprot No.</b>	P54762
<b>Immunogen</b>	Synthesized peptide derived from internal of Human EPHB1/2/3.
<b>Raised In</b>	Rabbit
<b>Species Reactivity</b>	Human, Mouse
<b>Specificity</b>	The antibody detects endogenous levels of total EPHB1/2/3 protein.
<b>Tested Applications</b>	ELISA, IHC, IF; IHC: 1:50-1:100, IF: 1:100-1:500
<b>Form</b>	Rabbit IgG in phosphate buffered saline (without Mg <sup>2+</sup> and Ca <sup>2+</sup> ), pH 7.4, 150mM NaCl, 0.02% sodium azide and 50% glycerol.
<b>Purification Method</b>	The antibody was affinity-purified from rabbit antiserum by affinity-chromatography using epitope-specific immunogen.
<b>Clonality</b>	Polyclonal
<b>Alias</b>	EC 2.7.10.1; ELK; EPB1; EPHT2; EPTH2
<b>Product Type</b>	Polyclonal Antibody
<b>Immunogen Species</b>	Homo sapiens (Human)
<b>Target Names</b>	EPHB1/EPHB2/EPHB3

## Image



Immunohistochemistry analysis of paraffin-embedded human brain tissue using EPHB1/2/3 antibody.



Immunofluorescence analysis of NIH/3T3 cells, using EPHB1/2/3 antibody.

**Usage**

For Research Use Only. Not for use in diagnostic or therapeutic procedures.