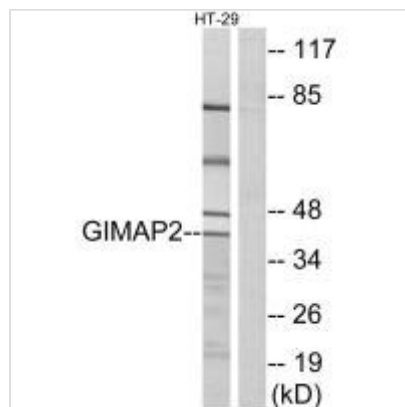




GIMAP2 Antibody

Product Code	CSB-PA137765
Storage	Upon receipt, store at -20°C or -80°C. Avoid repeated freeze.
Uniprot No.	Q9UG22
Immunogen	Synthesized peptide derived from internal of Human GIMAP2.
Raised In	Rabbit
Species Reactivity	Human
Specificity	The antibody detects endogenous levels of total GIMAP2 protein.
Tested Applications	ELISA, WB, IF; WB: 1:500-1:3000, IF: 1:100-1:500
Form	Rabbit IgG in phosphate buffered saline (without Mg ²⁺ and Ca ²⁺), pH 7.4, 150mM NaCl, 0.02% sodium azide and 50% glycerol.
Purification Method	The antibody was affinity-purified from rabbit antiserum by affinity-chromatography using epitope-specific immunogen.
Clonality	Polyclonal
Alias	gima2; gimap2; gtpase imap family member 2; gtpase; imap family member 2
Product Type	Polyclonal Antibody
Immunogen Species	Homo sapiens (Human)
Target Names	GIMAP2

Image



Western blot analysis of extracts from HT-29 cells, using GIMAP2 antibody.



Immunofluorescence analysis of A549 cells,
using GIMAP2 antibody.