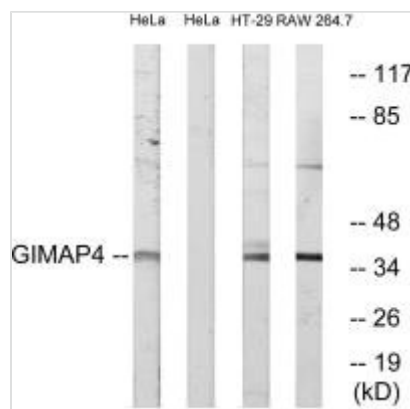




GIMAP4 Antibody

Product Code	CSB-PA910166
Storage	Upon receipt, store at -20°C or -80°C. Avoid repeated freeze.
Uniprot No.	Q9NUV9
Immunogen	Synthesized peptide derived from internal of Human GIMAP4.
Raised In	Rabbit
Species Reactivity	Human
Specificity	The antibody detects endogenous levels of total GIMAP4 protein.
Tested Applications	ELISA,WB;WB:1:500-1:3000
Form	Rabbit IgG in phosphate buffered saline (without Mg ²⁺ and Ca ²⁺), pH 7.4, 150mM NaCl, 0.02% sodium azide and 50% glycerol.
Purification Method	The antibody was affinity-purified from rabbit antiserum by affinity-chromatography using epitope-specific immunogen.
Clonality	Polyclonal
Alias	GIMA4; GTPase; IMAP 4; IAN1; IMAP family member 4
Product Type	Polyclonal Antibody
Immunogen Species	Homo sapiens (Human)
Target Names	GIMAP4

Image



Western blot analysis of extracts from HeLa cells, HT-29 cells and RAW264.7 cells, using GIMAP4 antibody.

Usage

For Research Use Only. Not for use in diagnostic or therapeutic procedures.