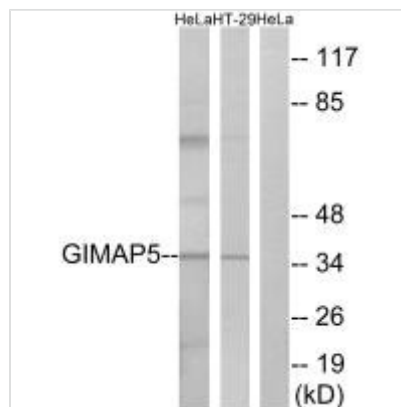




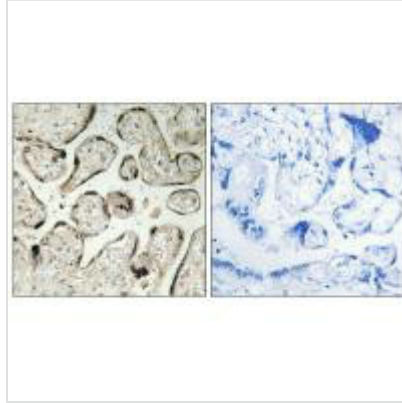
GIMAP5 Antibody

Product Code	CSB-PA019759
Storage	Upon receipt, store at -20°C or -80°C. Avoid repeated freeze.
Uniprot No.	Q96F15
Immunogen	Synthesized peptide derived from internal of Human GIMAP5.
Raised In	Rabbit
Species Reactivity	Human
Specificity	The antibody detects endogenous levels of total GIMAP5 protein.
Tested Applications	ELISA,WB,IHC;WB:1:500-1:3000,IHC:1:50-1:100
Form	Rabbit IgG in phosphate buffered saline (without Mg ²⁺ and Ca ²⁺), pH 7.4, 150mM NaCl, 0.02% sodium azide and 50% glycerol.
Purification Method	The antibody was affinity-purified from rabbit antiserum by affinity-chromatography using epitope-specific immunogen.
Clonality	Polyclonal
Alias	GIMA5; GTPase; IMAP family 5; HIMAP3; IAN-5
Product Type	Polyclonal Antibody
Immunogen Species	Homo sapiens (Human)
Target Names	GIMAP5

Image



Western blot analysis of extracts from HeLa cells and HT-29 cells, using GIMAP5 antibody.



Immunohistochemistry analysis of paraffin-embedded human placenta tissue using GIMAP5 antibody.

Usage

For Research Use Only. Not for use in diagnostic or therapeutic procedures.