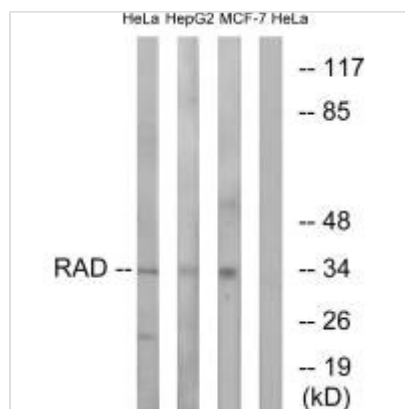




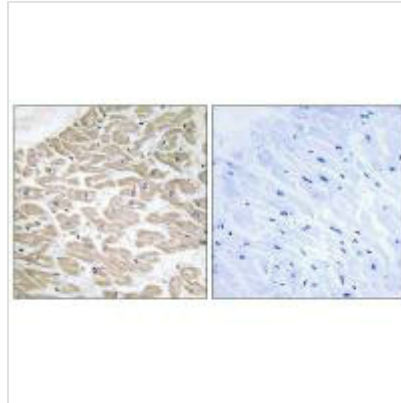
RRAD Antibody

Product Code	CSB-PA233809
Storage	Upon receipt, store at -20°C or -80°C. Avoid repeated freeze.
Uniprot No.	P55042
Immunogen	Synthesized peptide derived from internal of Human RAD.
Raised In	Rabbit
Species Reactivity	Human,Mouse,Rat
Specificity	The antibody detects endogenous levels of total RAD protein.
Tested Applications	ELISA,WB,IHC,IF;WB:1:500-1:3000,IHC:1:50-1:100,IF:1:100-1:500
Form	Rabbit IgG in phosphate buffered saline (without Mg ²⁺ and Ca ²⁺), pH 7.4, 150mM NaCl, 0.02% sodium azide and 50% glycerol.
Purification Method	The antibody was affinity-purified from rabbit antiserum by affinity-chromatography using epitope-specific immunogen.
Clonality	Polyclonal
Alias	GTP-binding protein RAD; RAD; RAD1; RAS associated with diabetes;
Product Type	Polyclonal Antibody
Immunogen Species	Homo sapiens (Human)
Target Names	RRAD

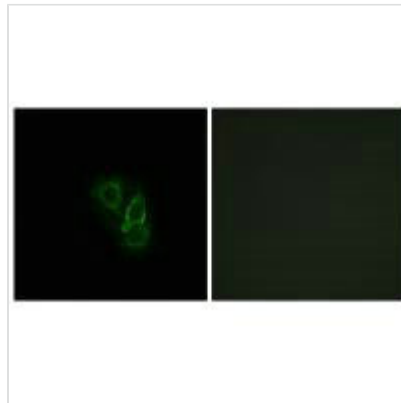
Image



Western blot analysis of extracts from HeLa cells, HepG2 cells and MCF-7 cells, using RAD antibody.



Immunohistochemistry analysis of paraffin-embedded human heart tissue using RAD antibody.



Immunofluorescence analysis of A549 cells, using RAD antibody.

Usage

For Research Use Only. Not for use in diagnostic or therapeutic procedures.