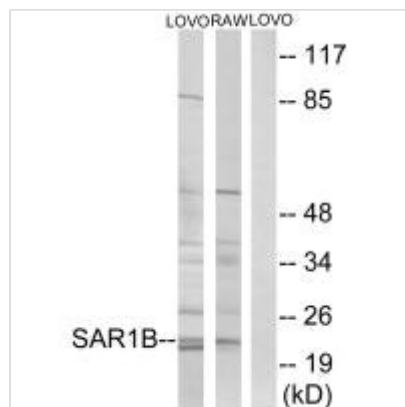




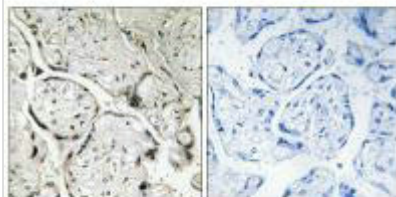
SAR1B Antibody

Product Code	CSB-PA296125
Storage	Upon receipt, store at -20°C or -80°C. Avoid repeated freeze.
Uniprot No.	Q9Y6B6
Immunogen	Synthesized peptide derived from internal of Human SAR1B.
Raised In	Rabbit
Species Reactivity	Human,Mouse,Rat
Specificity	The antibody detects endogenous levels of total SAR1B protein.
Tested Applications	ELISA,WB,IHC;WB:1:500-1:3000,IHC:1:50-1:100
Form	Rabbit IgG in phosphate buffered saline (without Mg ²⁺ and Ca ²⁺), pH 7.4, 150mM NaCl, 0.02% sodium azide and 50% glycerol.
Purification Method	The antibody was affinity-purified from rabbit antiserum by affinity-chromatography using epitope-specific immunogen.
Clonality	Polyclonal
Alias	GTP-binding protein SAR1b; GTBPB; SAR1B; SARA2; SARB
Product Type	Polyclonal Antibody
Immunogen Species	Homo sapiens (Human)
Target Names	SAR1B

Image



Western blot analysis of extracts from LOVO cells and RAW264.7 cells, using SAR1B antibody.



Immunohistochemistry analysis of paraffin-embedded human placenta tissue using SAR1B antibody.