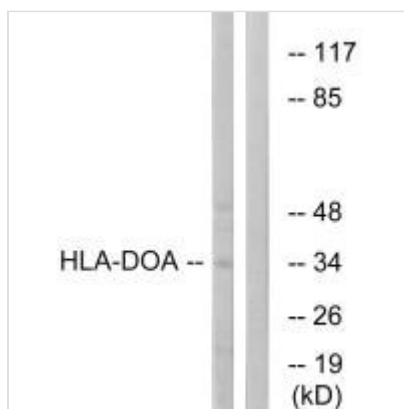




HLA-DOA Antibody

Product Code	CSB-PA113671
Storage	Upon receipt, store at -20°C or -80°C. Avoid repeated freeze.
Uniprot No.	P06340
Immunogen	Synthesized peptide derived from internal of Human HLA-DOA.
Raised In	Rabbit
Species Reactivity	Human
Specificity	The antibody detects endogenous levels of total HLA-DOA protein.
Tested Applications	ELISA,WB;WB:1:500-1:3000
Form	Rabbit IgG in phosphate buffered saline (without Mg ²⁺ and Ca ²⁺), pH 7.4, 150mM NaCl, 0.02% sodium azide and 50% glycerol.
Purification Method	The antibody was affinity-purified from rabbit antiserum by affinity-chromatography using epitope-specific immunogen.
Clonality	Polyclonal
Alias	HLA class II histocompatibility antigen; DO alpha chain [Precursor]; MHC class II antigen DOA; MHC DZ alpha; MHC DN-alpha
Product Type	Polyclonal Antibody
Immunogen Species	Homo sapiens (Human)
Target Names	HLA-DOA

Image



Western blot analysis of extracts from COLO cells, using HLA-DOA antibody.

Usage For Research Use Only. Not for use in diagnostic or therapeutic procedures.