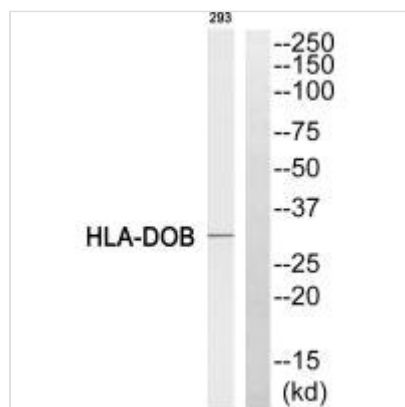




HLA-DOB Antibody

Product Code	CSB-PA270928
Storage	Upon receipt, store at -20°C or -80°C. Avoid repeated freeze.
Uniprot No.	P13765
Immunogen	Synthesized peptide derived from N-terminal of Human HLA-DOB.
Raised In	Rabbit
Species Reactivity	Human
Specificity	The antibody detects endogenous levels of total HLA-DOB protein.
Tested Applications	ELISA, WB; WB: 1:500-1:3000
Form	Rabbit IgG in phosphate buffered saline (without Mg ²⁺ and Ca ²⁺), pH 7.4, 150mM NaCl, 0.02% sodium azide and 50% glycerol.
Purification Method	The antibody was affinity-purified from rabbit antiserum by affinity-chromatography using epitope-specific immunogen.
Clonality	Polyclonal
Alias	HLA class II histocompatibility antigen; DO beta chain; MHC class II antigen DOB;
Product Type	Polyclonal Antibody
Immunogen Species	Homo sapiens (Human)
Target Names	HLA-DOB

Image



Western blot analysis of extracts from 293 cell, using HLA-DOB antibody.