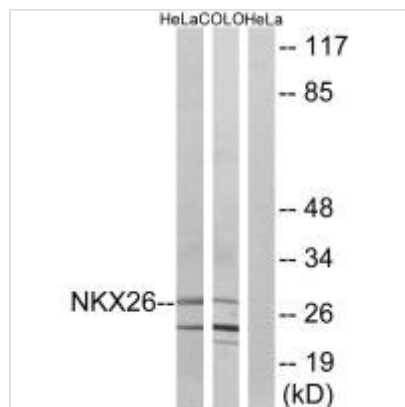




NKX2-6 Antibody

Product Code	CSB-PA877108
Storage	Upon receipt, store at -20°C or -80°C. Avoid repeated freeze.
Uniprot No.	A6NCS4
Immunogen	Synthesized peptide derived from internal of Human NKX26.
Raised In	Rabbit
Species Reactivity	Human
Specificity	The antibody detects endogenous levels of total NKX26 protein.
Tested Applications	ELISA,WB;WB:1:500-1:3000
Form	Rabbit IgG in phosphate buffered saline (without Mg ²⁺ and Ca ²⁺), pH 7.4, 150mM NaCl, 0.02% sodium azide and 50% glycerol.
Purification Method	The antibody was affinity-purified from rabbit antiserum by affinity-chromatography using epitope-specific immunogen.
Clonality	Polyclonal
Alias	CSX2; homeobox Nkx-2.6; NK2 transcription factor related; 6; NKX26
Product Type	Polyclonal Antibody
Immunogen Species	Homo sapiens (Human)
Target Names	NKX2-6

Image



Western blot analysis of extracts from HeLa cells and COLO cells, using NKX26 antibody.

Usage

For Research Use Only. Not for use in diagnostic or therapeutic procedures.