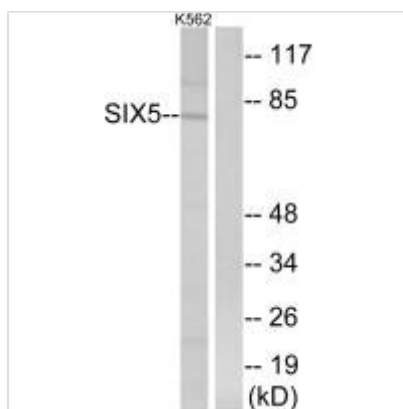




SIX5 Antibody

Product Code	CSB-PA103371
Storage	Upon receipt, store at -20°C or -80°C. Avoid repeated freeze.
Uniprot No.	Q8N196
Immunogen	Synthesized peptide derived from internal of Human SIX5.
Raised In	Rabbit
Species Reactivity	Human,Mouse
Specificity	The antibody detects endogenous levels of total SIX5 protein.
Tested Applications	ELISA,WB;WB:1:500-1:3000
Form	Rabbit IgG in phosphate buffered saline (without Mg ²⁺ and Ca ²⁺), pH 7.4, 150mM NaCl, 0.02% sodium azide and 50% glycerol.
Purification Method	The antibody was affinity-purified from rabbit antiserum by affinity-chromatography using epitope-specific immunogen.
Clonality	Polyclonal
Alias	DM locus-associated homeodomain protein; DMAHP; homeobox protein SIX5;
Product Type	Polyclonal Antibody
Immunogen Species	Homo sapiens (Human)
Target Names	SIX5

Image



Western blot analysis of extracts from K562 cells, using SIX5 antibody.