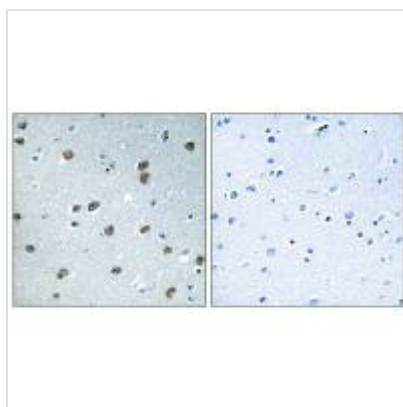




KLHL29 Antibody

Product Code	CSB-PA240649
Storage	Upon receipt, store at -20°C or -80°C. Avoid repeated freeze.
Uniprot No.	Q96CT2
Immunogen	Synthesized peptide derived from internal of Human KLHL29.
Raised In	Rabbit
Species Reactivity	Human, Mouse
Specificity	The antibody detects endogenous levels of total KLHL29 protein.
Tested Applications	ELISA, IHC; IHC: 1:50-1:100
Form	Rabbit IgG in phosphate buffered saline (without Mg ²⁺ and Ca ²⁺), pH 7.4, 150mM NaCl, 0.02% sodium azide and 50% glycerol.
Purification Method	The antibody was affinity-purified from rabbit antiserum by affinity-chromatography using epitope-specific immunogen.
Clonality	Polyclonal
Alias	Kelch-like protein 29; Kelch repeat and BTB domain-containing protein 9;
Product Type	Polyclonal Antibody
Immunogen Species	Homo sapiens (Human)
Target Names	KLHL29

Image



Immunohistochemistry analysis of paraffin-embedded human brain tissue using KLHL29 antibody.

Usage

For Research Use Only. Not for use in diagnostic or therapeutic procedures.