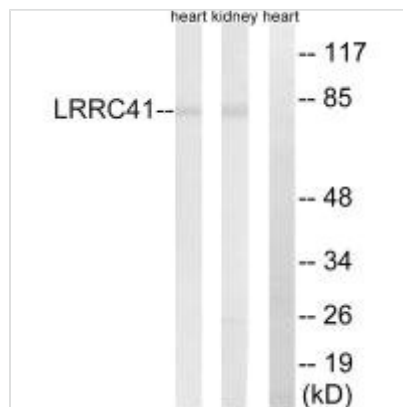




LRRC41 Antibody

Product Code	CSB-PA590181
Storage	Upon receipt, store at -20°C or -80°C. Avoid repeated freeze.
Uniprot No.	Q15345
Immunogen	Synthesized peptide derived from internal of Human LRRC41.
Raised In	Rabbit
Species Reactivity	Human
Specificity	The antibody detects endogenous levels of total LRRC41 protein.
Tested Applications	ELISA,WB;WB:1:500-1:3000
Form	Rabbit IgG in phosphate buffered saline (without Mg ²⁺ and Ca ²⁺), pH 7.4, 150mM NaCl, 0.02% sodium azide and 50% glycerol.
Purification Method	The antibody was affinity-purified from rabbit antiserum by affinity-chromatography using epitope-specific immunogen.
Clonality	Polyclonal
Alias	Leucine-rich repeat-containing protein 41; Protein Muf1;
Product Type	Polyclonal Antibody
Immunogen Species	Homo sapiens (Human)
Target Names	LRRC41

Image



Western blot analysis of extracts from rat kidney/rat heart cells, using LRRC41 antibody.

Usage

For Research Use Only. Not for use in diagnostic or therapeutic procedures.