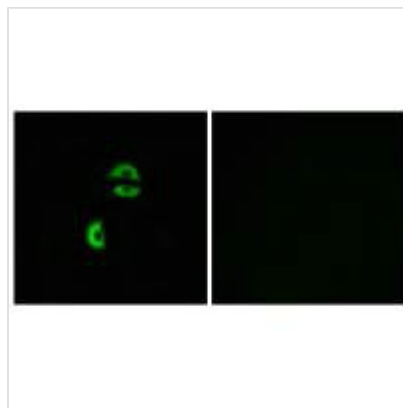




LDLRAD3 Antibody

| | |
|----------------------------|----------------------------------------------------------------------------------------------------------------------------------------------------|
| Product Code | CSB-PA786511 |
| Storage | Upon receipt, store at -20°C or -80°C. Avoid repeated freeze. |
| Uniprot No. | Q86YD5 |
| Immunogen | Synthesized peptide derived from internal of Human LDLRAD3. |
| Raised In | Rabbit |
| Species Reactivity | Human, Mouse |
| Specificity | The antibody detects endogenous levels of total LDLRAD3 protein. |
| Tested Applications | ELISA, IF; IF: 1:100-1:500 |
| Form | Rabbit IgG in phosphate buffered saline (without Mg ²⁺ and Ca ²⁺), pH 7.4, 150mM NaCl, 0.02% sodium azide and 50% glycerol. |
| Purification Method | The antibody was affinity-purified from rabbit antiserum by affinity-chromatography using epitope-specific immunogen. |
| Clonality | Polyclonal |
| Alias | Low-density lipoprotein receptor class A domain-containing protein 3; |
| Product Type | Polyclonal Antibody |
| Immunogen Species | Homo sapiens (Human) |
| Target Names | LDLRAD3 |

Image



Immunofluorescence analysis of A549 cells, using LDLRAD3 antibody.

Usage

For Research Use Only. Not for use in diagnostic or therapeutic procedures.