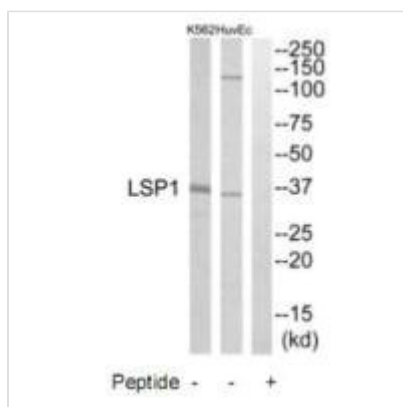




LSP1 Antibody

| | |
|----------------------------|--|
| Product Code | CSB-PA957371 |
| Storage | Upon receipt, store at -20°C or -80°C. Avoid repeated freeze. |
| Uniprot No. | P33241 |
| Immunogen | Synthesized peptide derived from internal of Human LSP1. |
| Raised In | Rabbit |
| Species Reactivity | Human |
| Specificity | The antibody detects endogenous levels of total LSP1 protein. |
| Tested Applications | ELISA, WB; WB: 1:500-1:3000 |
| Form | Rabbit IgG in phosphate buffered saline (without Mg ²⁺ and Ca ²⁺), pH 7.4, 150mM NaCl, 0.02% sodium azide and 50% glycerol. |
| Purification Method | The antibody was affinity-purified from rabbit antiserum by affinity-chromatography using epitope-specific immunogen. |
| Clonality | Polyclonal |
| Alias | Lymphocyte-specific protein 1; Protein pp52; 52 kDa phosphoprotein; Lymphocyte-specific antigen WP34; 47 kDa actin-binding protein |
| Product Type | Polyclonal Antibody |
| Immunogen Species | Homo sapiens (Human) |
| Target Names | LSP1 |

Image



Western blot analysis of extracts from HuvEc cells and K562 cells, using LSP1 antibody.

Usage

For Research Use Only. Not for use in diagnostic or therapeutic procedures.