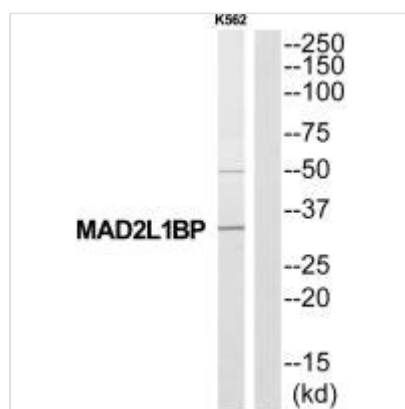




MAD2L1BP Antibody

Product Code	CSB-PA901414
Storage	Upon receipt, store at -20°C or -80°C. Avoid repeated freeze.
Uniprot No.	Q15013
Immunogen	Synthesized peptide derived from N-terminal of Human MAD2L1BP.
Raised In	Rabbit
Species Reactivity	Human
Specificity	The antibody detects endogenous levels of total MAD2L1BP protein.
Tested Applications	ELISA, WB; WB: 1:500-1:3000
Form	Rabbit IgG in phosphate buffered saline (without Mg ²⁺ and Ca ²⁺), pH 7.4, 150mM NaCl, 0.02% sodium azide and 50% glycerol.
Purification Method	The antibody was affinity-purified from rabbit antiserum by affinity-chromatography using epitope-specific immunogen.
Clonality	Polyclonal
Alias	Caught by MAD2 protein; CMT2; KIAA0110; MAD2L1 binding protein; MAD2L1-binding protein
Product Type	Polyclonal Antibody
Immunogen Species	Homo sapiens (Human)
Target Names	MAD2L1BP

Image



Western blot analysis of extracts from K562 cells, using MAD2L1BP antibody.

Usage

For Research Use Only. Not for use in diagnostic or therapeutic procedures.