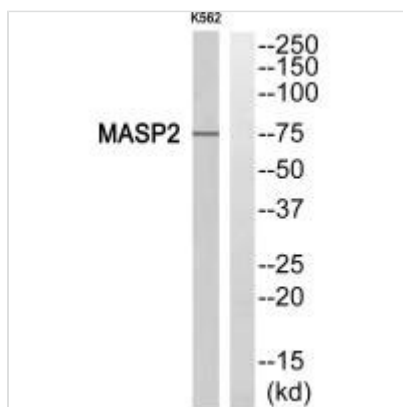




MASP2 Antibody

Product Code	CSB-PA943074
Storage	Upon receipt, store at -20°C or -80°C. Avoid repeated freeze.
Uniprot No.	O00187
Immunogen	Synthesized peptide derived from internal of Human MASP2.
Raised In	Rabbit
Species Reactivity	Human
Specificity	The antibody detects endogenous levels of total MASP2 protein.
Tested Applications	ELISA,WB;WB:1:500-1:3000
Form	Rabbit IgG in phosphate buffered saline (without Mg ²⁺ and Ca ²⁺), pH 7.4, 150mM NaCl, 0.02% sodium azide and 50% glycerol.
Purification Method	The antibody was affinity-purified from rabbit antiserum by affinity-chromatography using epitope-specific immunogen.
Clonality	Polyclonal
Alias	Mannan-binding lectin serine protease 2; Mannose-binding protein-associated serine protease 2; MASP-2; MBL-associated serine protease 2;
Product Type	Polyclonal Antibody
Immunogen Species	Homo sapiens (Human)
Target Names	MASP2

Image



Western blot analysis of extracts from K562 cell, using MASP2 antibody.