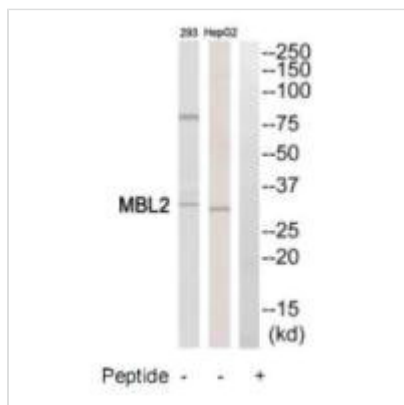




MBL2 Antibody

Product Code	CSB-PA127636
Storage	Upon receipt, store at -20°C or -80°C. Avoid repeated freeze.
Uniprot No.	P11226
Immunogen	Synthesized peptide derived from internal of Human MBL2.
Raised In	Rabbit
Species Reactivity	Human
Specificity	The antibody detects endogenous levels of total MBL2 protein.
Tested Applications	ELISA,WB;WB:1:500-1:3000
Form	Rabbit IgG in phosphate buffered saline (without Mg ²⁺ and Ca ²⁺), pH 7.4, 150mM NaCl, 0.02% sodium azide and 50% glycerol.
Purification Method	The antibody was affinity-purified from rabbit antiserum by affinity-chromatography using epitope-specific immunogen.
Clonality	Polyclonal
Alias	Mannose-binding protein C; MBP-C; MBP1; Mannan-binding protein; Mannose-binding lectin
Product Type	Polyclonal Antibody
Immunogen Species	Homo sapiens (Human)
Target Names	MBL2

Image



Western blot analysis of extracts from HepG2 cells and 293 cells, using MBL2 antibody.