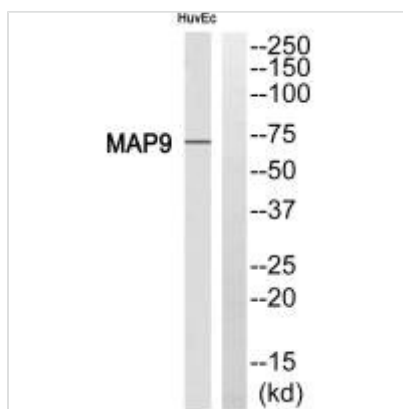




MAP9 Antibody

Product Code	CSB-PA102126
Storage	Upon receipt, store at -20°C or -80°C. Avoid repeated freeze.
Uniprot No.	Q49MG5
Immunogen	Synthesized peptide derived from internal of Human MAP9.
Raised In	Rabbit
Species Reactivity	Human
Specificity	The antibody detects endogenous levels of total MAP9 protein.
Tested Applications	ELISA, WB; WB: 1:500-1:3000
Form	Rabbit IgG in phosphate buffered saline (without Mg ²⁺ and Ca ²⁺), pH 7.4, 150mM NaCl, 0.02% sodium azide and 50% glycerol.
Purification Method	The antibody was affinity-purified from rabbit antiserum by affinity-chromatography using epitope-specific immunogen.
Clonality	Polyclonal
Alias	Microtubule-associated protein 9; Aster-associated protein; ASAP;
Product Type	Polyclonal Antibody
Immunogen Species	Homo sapiens (Human)
Target Names	MAP9

Image



Western blot analysis of extracts from HuvEc cell, using MAP9 antibody.

Usage

For Research Use Only. Not for use in diagnostic or therapeutic procedures.