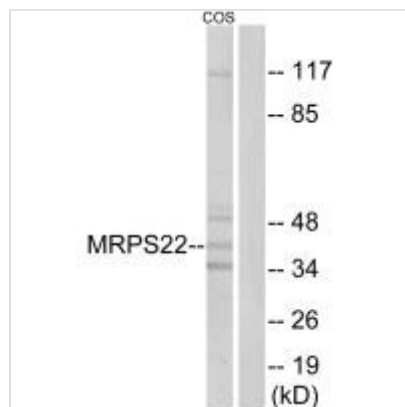




MRPS22 Antibody

Product Code	CSB-PA785563
Storage	Upon receipt, store at -20°C or -80°C. Avoid repeated freeze.
Uniprot No.	P82650
Immunogen	Synthesized peptide derived from internal of Human MRPS22.
Raised In	Rabbit
Species Reactivity	Human
Specificity	The antibody detects endogenous levels of total MRPS22 protein.
Tested Applications	ELISA,WB,IF;WB:1:500-1:3000,IF:1:100-1:500
Form	Rabbit IgG in phosphate buffered saline (without Mg ²⁺ and Ca ²⁺), pH 7.4, 150mM NaCl, 0.02% sodium azide and 50% glycerol.
Purification Method	The antibody was affinity-purified from rabbit antiserum by affinity-chromatography using epitope-specific immunogen.
Clonality	Polyclonal
Alias	mitochondrial 28S ribosomal protein S22; MRP-S22; RPMS22; RT22; S22mt
Product Type	Polyclonal Antibody
Immunogen Species	Homo sapiens (Human)
Target Names	MRPS22

Image



Western blot analysis of extracts from COS cells, using MRPS22 antibody.



Immunofluorescence analysis of A549 cells,
using MRPS22 antibody.