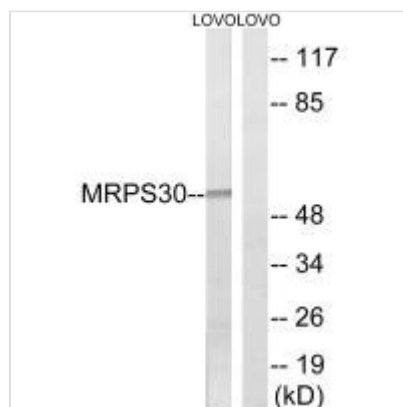




MRPS30 Antibody

Product Code	CSB-PA915695
Storage	Upon receipt, store at -20°C or -80°C. Avoid repeated freeze.
Uniprot No.	Q9NP92
Immunogen	Synthesized peptide derived from C-terminal of Human MRPS30.
Raised In	Rabbit
Species Reactivity	Human
Specificity	The antibody detects endogenous levels of total MRPS30 protein.
Tested Applications	ELISA, WB; WB: 1:500-1:3000
Form	Rabbit IgG in phosphate buffered saline (without Mg ²⁺ and Ca ²⁺), pH 7.4, 150mM NaCl, 0.02% sodium azide and 50% glycerol.
Purification Method	The antibody was affinity-purified from rabbit antiserum by affinity-chromatography using epitope-specific immunogen.
Clonality	Polyclonal
Alias	BM-047; mitochondrial 28S ribosomal protein S30; mitochondrial ribosomal protein S30; MRP-S30; PAP
Product Type	Polyclonal Antibody
Immunogen Species	Homo sapiens (Human)
Target Names	MRPS30

Image



Western blot analysis of extracts from LOVO cells, using MRPS30 antibody.