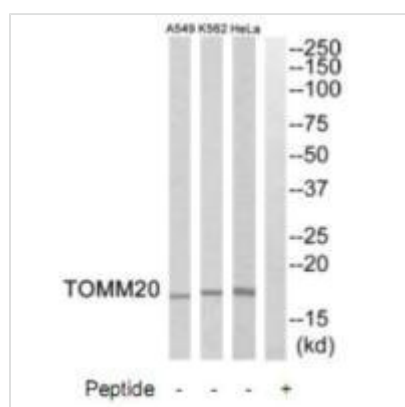




TOMM20 Antibody

Product Code	CSB-PA167518
Storage	Upon receipt, store at -20°C or -80°C. Avoid repeated freeze.
Uniprot No.	Q15388
Immunogen	Synthesized peptide derived from internal of Human TOMM20.
Raised In	Rabbit
Species Reactivity	Human
Specificity	The antibody detects endogenous levels of total TOMM20 protein.
Tested Applications	ELISA, WB; WB: 1:500-1:3000
Form	Rabbit IgG in phosphate buffered saline (without Mg ²⁺ and Ca ²⁺), pH 7.4, 150mM NaCl, 0.02% sodium azide and 50% glycerol.
Purification Method	The antibody was affinity-purified from rabbit antiserum by affinity-chromatography using epitope-specific immunogen.
Clonality	Polyclonal
Alias	Mitochondrial import receptor subunit TOM20 homolog; Mitochondrial 20 kDa outer membrane protein; Outer mitochondrial membrane receptor Tom20; KIAA0016;
Product Type	Polyclonal Antibody
Immunogen Species	Homo sapiens (Human)
Target Names	TOMM20

Image



Western blot analysis of extracts from HeLa cells, K562 cells and A549 cells, using TOMM20 antibody.