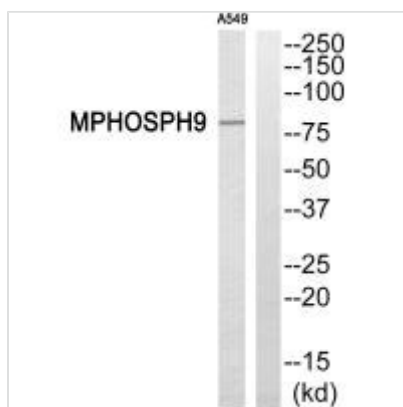




KIF20B Antibody

Product Code	CSB-PA956782
Storage	Upon receipt, store at -20°C or -80°C. Avoid repeated freeze.
Uniprot No.	Q96Q89
Immunogen	Synthesized peptide derived from C-terminal of Human MPHOSPH9.
Raised In	Rabbit
Species Reactivity	Human
Specificity	The antibody detects endogenous levels of total MPHOSPH9 protein.
Tested Applications	ELISA, WB; WB: 1:500-1:3000
Form	Rabbit IgG in phosphate buffered saline (without Mg ²⁺ and Ca ²⁺), pH 7.4, 150mM NaCl, 0.02% sodium azide and 50% glycerol.
Purification Method	The antibody was affinity-purified from rabbit antiserum by affinity-chromatography using epitope-specific immunogen.
Clonality	Polyclonal
Alias	M-phase phosphoprotein 9; MPP9;
Product Type	Polyclonal Antibody
Immunogen Species	Homo sapiens (Human)
Target Names	KIF20B

Image



Western blot analysis of extracts from A549 cells, using MPHOSPH9 antibody.

Usage For Research Use Only. Not for use in diagnostic or therapeutic procedures.