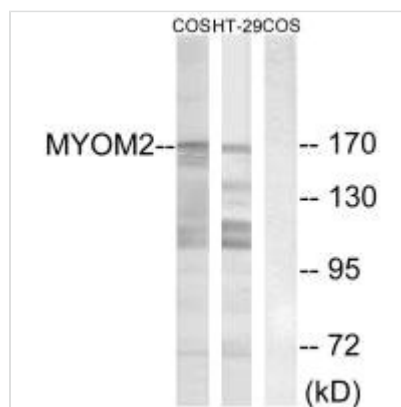




MYOM2 Antibody

Product Code	CSB-PA298876
Storage	Upon receipt, store at -20°C or -80°C. Avoid repeated freeze.
Uniprot No.	P54296
Immunogen	Synthesized peptide derived from internal of Human MYOM2.
Raised In	Rabbit
Species Reactivity	Human,Mouse
Specificity	The antibody detects endogenous levels of total MYOM2 protein.
Tested Applications	ELISA,WB;WB:1:500-1:3000
Form	Rabbit IgG in phosphate buffered saline (without Mg ²⁺ and Ca ²⁺), pH 7.4, 150mM NaCl, 0.02% sodium azide and 50% glycerol.
Purification Method	The antibody was affinity-purified from rabbit antiserum by affinity-chromatography using epitope-specific immunogen.
Clonality	Polyclonal
Alias	165 kDa connectin-associated protein; 165 kDa titin-associated protein; M-protein; MYOM2; myomesin-2
Product Type	Polyclonal Antibody
Immunogen Species	Homo sapiens (Human)
Target Names	MYOM2

Image



Western blot analysis of extracts from COS-7 cells and HT-29 cells, using MYOM2 antibody.

Usage For Research Use Only. Not for use in diagnostic or therapeutic procedures.