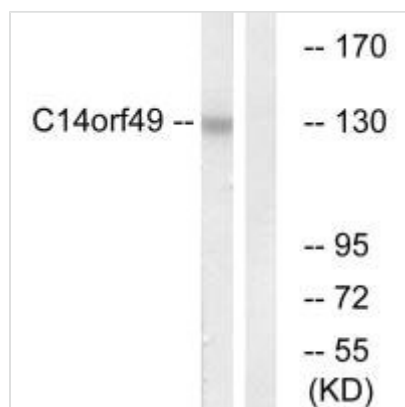




SYNE3 Antibody

Product Code	CSB-PA293250
Storage	Upon receipt, store at -20°C or -80°C. Avoid repeated freeze.
Uniprot No.	Q6ZMZ3
Immunogen	Synthesized peptide derived from internal of Human C14orf49.
Raised In	Rabbit
Species Reactivity	Human,Mouse
Specificity	The antibody detects endogenous levels of total C14orf49 protein.
Tested Applications	ELISA,WB;WB:1:500-1:3000
Form	Rabbit IgG in phosphate buffered saline (without Mg ²⁺ and Ca ²⁺), pH 7.4, 150mM NaCl, 0.02% sodium azide and 50% glycerol.
Purification Method	The antibody was affinity-purified from rabbit antiserum by affinity-chromatography using epitope-specific immunogen.
Clonality	Polyclonal
Alias	nesprin-3; SYNE3;
Product Type	Polyclonal Antibody
Immunogen Species	Homo sapiens (Human)
Target Names	SYNE3

Image



Western blot analysis of extracts from Jurkat cells, using C14orf49 antibody.