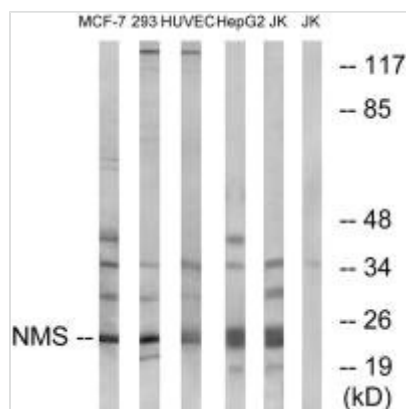




NMS Antibody

Product Code	CSB-PA233151
Storage	Upon receipt, store at -20°C or -80°C. Avoid repeated freeze.
Uniprot No.	Q5H8A3
Immunogen	Synthesized peptide derived from internal of Human NMS.
Raised In	Rabbit
Species Reactivity	Human
Specificity	The antibody detects endogenous levels of total NMS protein.
Tested Applications	ELISA,WB;WB:1:500-1:3000
Form	Rabbit IgG in phosphate buffered saline (without Mg ²⁺ and Ca ²⁺), pH 7.4, 150mM NaCl, 0.02% sodium azide and 50% glycerol.
Purification Method	The antibody was affinity-purified from rabbit antiserum by affinity-chromatography using epitope-specific immunogen.
Clonality	Polyclonal
Alias	Neuromedin-S [Precursor];
Product Type	Polyclonal Antibody
Immunogen Species	Homo sapiens (Human)
Target Names	NMS

Image



Western blot analysis of extracts from MCF-7 cells, 293 cells, HUVEC cells, HepG2 cells and Jurkat cells, using NMS antibody.

Usage

For Research Use Only. Not for use in diagnostic or therapeutic procedures.