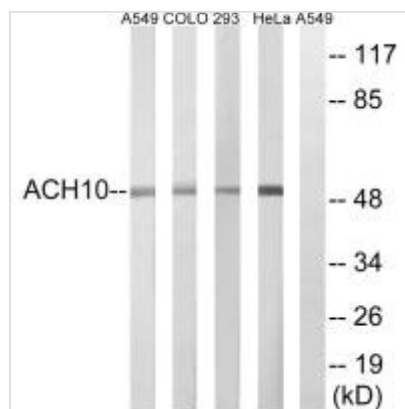




CHRNA10 Antibody

Product Code	CSB-PA289370
Storage	Upon receipt, store at -20°C or -80°C. Avoid repeated freeze.
Uniprot No.	Q9GZZ6
Immunogen	Synthesized peptide derived from C-terminal of Human CHRNA10.
Raised In	Rabbit
Species Reactivity	Human,Mouse
Specificity	The antibody detects endogenous levels of total CHRNA10 protein.
Tested Applications	ELISA,WB;WB:1:500-1:3000
Form	Rabbit IgG in phosphate buffered saline (without Mg ²⁺ and Ca ²⁺), pH 7.4, 150mM NaCl, 0.02% sodium azide and 50% glycerol.
Purification Method	The antibody was affinity-purified from rabbit antiserum by affinity-chromatography using epitope-specific immunogen.
Clonality	Polyclonal
Alias	ach10; cholinergic receptor; nicotinic; alpha 10; chrna10
Product Type	Polyclonal Antibody
Immunogen Species	Homo sapiens (Human)
Target Names	CHRNA10

Image



Western blot analysis of extracts from A549 cells, COLO cells, HeLa cells and 293 cells, using CHRNA10 antibody.