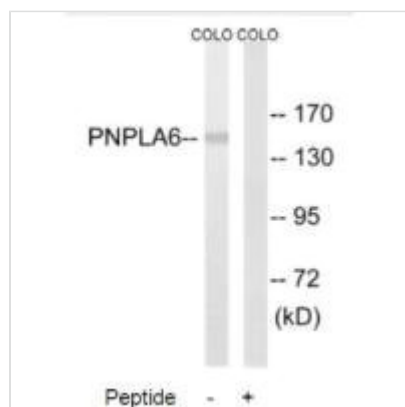




PNPLA6 Antibody

Product Code	CSB-PA927839
Storage	Upon receipt, store at -20°C or -80°C. Avoid repeated freeze.
Uniprot No.	Q8IY17
Immunogen	Synthesized peptide derived from internal of Human PNPLA6.
Raised In	Rabbit
Species Reactivity	Human
Specificity	The antibody detects endogenous levels of total PNPLA6 protein.
Tested Applications	ELISA,WB;WB:1:500-1:3000
Form	Rabbit IgG in phosphate buffered saline (without Mg ²⁺ and Ca ²⁺), pH 7.4, 150mM NaCl, 0.02% sodium azide and 50% glycerol.
Purification Method	The antibody was affinity-purified from rabbit antiserum by affinity-chromatography using epitope-specific immunogen.
Clonality	Polyclonal
Alias	Neuropathy target esterase; Patatin-like phospholipase domain-containing protein 6;
Product Type	Polyclonal Antibody
Immunogen Species	Homo sapiens (Human)
Target Names	PNPLA6

Image



Western blot analysis of extracts from COLO205 cells, using PNPLA6 antibody.

Usage For Research Use Only. Not for use in diagnostic or therapeutic procedures.