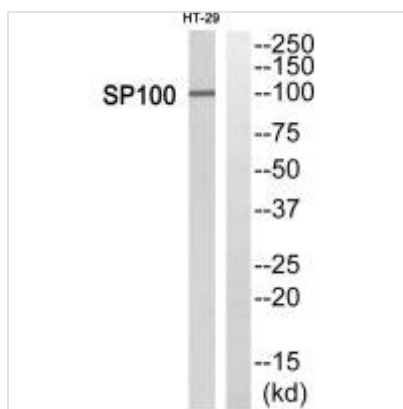




SP100 Antibody

Product Code	CSB-PA102856
Storage	Upon receipt, store at -20°C or -80°C. Avoid repeated freeze.
Uniprot No.	P23497
Immunogen	Synthesized peptide derived from Internal of Human SP100.
Raised In	Rabbit
Species Reactivity	Human
Specificity	The antibody detects endogenous levels of total SP100protein.
Tested Applications	ELISA,WB;WB:1:500-1:3000
Form	Rabbit IgG in phosphate buffered saline (without Mg ²⁺ and Ca ²⁺), pH 7.4, 150mM NaCl, 0.02% sodium azide and 50% glycerol.
Purification Method	The antibody was affinity-purified from rabbit antiserum by affinity-chromatography using epitope-specific immunogen.
Clonality	Polyclonal
Alias	DKFZp686E07254; FLJ00340; FLJ34579; Lysp100b; nuclear antigen Sp100
Product Type	Polyclonal Antibody
Immunogen Species	Homo sapiens (Human)
Target Names	SP100

Image



Western blot analysis of extracts from HT29 cells, using SP100 antibody.

Usage

For Research Use Only. Not for use in diagnostic or therapeutic procedures.