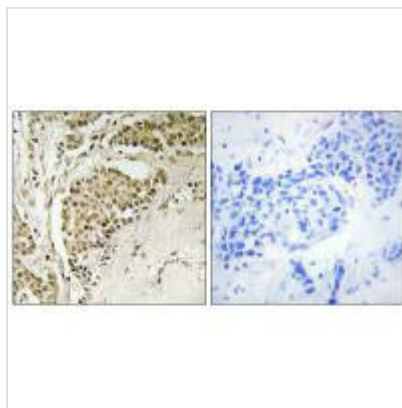




NOM1 Antibody

Product Code	CSB-PA790258
Storage	Upon receipt, store at -20°C or -80°C. Avoid repeated freeze.
Uniprot No.	Q5C9Z
Immunogen	Synthesized peptide derived from C-terminal of Human NOM1.
Raised In	Rabbit
Species Reactivity	Human,Mouse
Specificity	The antibody detects endogenous levels of total NOM1 protein.
Tested Applications	ELISA,IHC;IHC:1:50-1:100
Form	Rabbit IgG in phosphate buffered saline (without Mg ²⁺ and Ca ²⁺), pH 7.4, 150mM NaCl, 0.02% sodium azide and 50% glycerol.
Purification Method	The antibody was affinity-purified from rabbit antiserum by affinity-chromatography using epitope-specific immunogen.
Clonality	Polyclonal
Alias	Nucleolar MIF4G domain-containing protein 1; SGD1 homolog;
Product Type	Polyclonal Antibody
Immunogen Species	Homo sapiens (Human)
Target Names	NOM1

Image



Immunohistochemistry analysis of paraffin-embedded human breast carcinoma tissue using NOM1 antibody.