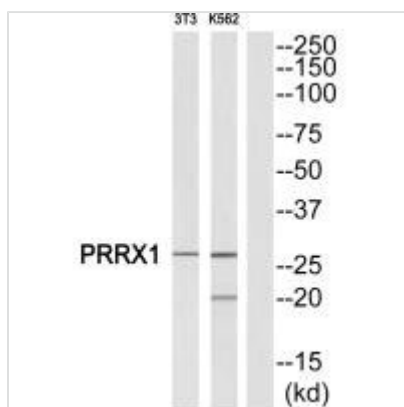




PRRX1 Antibody

Product Code	CSB-PA188829
Storage	Upon receipt, store at -20°C or -80°C. Avoid repeated freeze.
Uniprot No.	P54821
Immunogen	Synthesized peptide derived from Internal of Human PRRX1.
Raised In	Rabbit
Species Reactivity	Human,Mouse,Rat
Specificity	The antibody detects endogenous levels of total PRRX1 protein.
Tested Applications	ELISA,WB;WB:1:500-1:3000
Form	Rabbit IgG in phosphate buffered saline (without Mg ²⁺ and Ca ²⁺), pH 7.4, 150mM NaCl, 0.02% sodium azide and 50% glycerol.
Purification Method	The antibody was affinity-purified from rabbit antiserum by affinity-chromatography using epitope-specific immunogen.
Clonality	Polyclonal
Alias	Homeobox protein PHOX1; paired mesoderm homeo box 1; paired mesoderm homeobox 1 isoform pmx-1b; Paired mesoderm homeobox protein 1; paired related homeobox 1
Product Type	Polyclonal Antibody
Immunogen Species	Homo sapiens (Human)
Target Names	PRRX1

Image



Western blot analysis of extracts from NIH-3T3/K562 cells, using PRRX1 antibody.

Usage For Research Use Only. Not for use in diagnostic or therapeutic procedures.