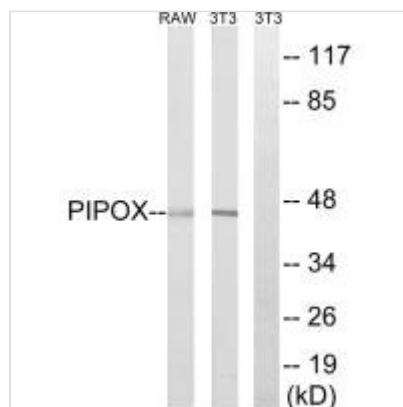




PIPOX Antibody

Product Code	CSB-PA955830
Storage	Upon receipt, store at -20°C or -80°C. Avoid repeated freeze.
Uniprot No.	Q9P0Z9
Immunogen	Synthesized peptide derived from internal of Human PIPOX.
Raised In	Rabbit
Species Reactivity	Human
Specificity	The antibody detects endogenous levels of total PIPOX protein.
Tested Applications	ELISA, WB; WB: 1:500-1:3000
Form	Rabbit IgG in phosphate buffered saline (without Mg ²⁺ and Ca ²⁺), pH 7.4, 150mM NaCl, 0.02% sodium azide and 50% glycerol.
Purification Method	The antibody was affinity-purified from rabbit antiserum by affinity-chromatography using epitope-specific immunogen.
Clonality	Polyclonal
Alias	Peroxisomal sarcosine oxidase; EC 1.5.3.1; PSO; L-pipecolate oxidase; EC 1.5.3.7
Product Type	Polyclonal Antibody
Immunogen Species	Homo sapiens (Human)
Target Names	PIPOX

Image



Western blot analysis of extracts from NIH/3T3 cells and RAW264.7 cells, using PIPOX antibody.

Usage For Research Use Only. Not for use in diagnostic or therapeutic procedures.