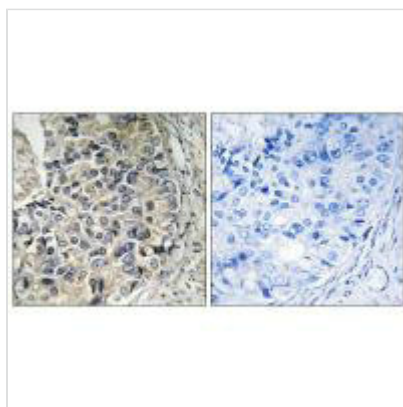




SLC25A12 Antibody

Product Code	CSB-PA099323
Storage	Upon receipt, store at -20°C or -80°C. Avoid repeated freeze.
Uniprot No.	O75746
Immunogen	Synthesized peptide derived from internal of Human CMC1.
Raised In	Rabbit
Species Reactivity	Human, Mouse
Specificity	The antibody detects endogenous levels of total CMC1 protein.
Tested Applications	ELISA, IHC; IHC: 1:50-1:100
Form	Rabbit IgG in phosphate buffered saline (without Mg ²⁺ and Ca ²⁺), pH 7.4, 150mM NaCl, 0.02% sodium azide and 50% glycerol.
Purification Method	The antibody was affinity-purified from rabbit antiserum by affinity-chromatography using epitope-specific immunogen.
Clonality	Polyclonal
Alias	Calcium-binding mitochondrial carrier protein Aralar1; Mitochondrial aspartate glutamate carrier 1; Solute carrier family 25 member 12;
Product Type	Polyclonal Antibody
Immunogen Species	Homo sapiens (Human)
Target Names	SLC25A12

Image



Immunohistochemistry analysis of paraffin-embedded human prostate carcinoma tissue using CMC1 antibody.

Usage For Research Use Only. Not for use in diagnostic or therapeutic procedures.