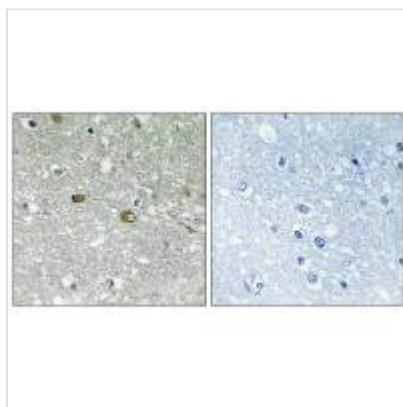




PIGH Antibody

Product Code	CSB-PA238046
Storage	Upon receipt, store at -20°C or -80°C. Avoid repeated freeze.
Uniprot No.	Q14442
Immunogen	Synthesized peptide derived from C-terminal of Human PIGH.
Raised In	Rabbit
Species Reactivity	Human, Mouse
Specificity	The antibody detects endogenous levels of total PIGH protein.
Tested Applications	ELISA, IHC; IHC: 1:50-1:100
Form	Rabbit IgG in phosphate buffered saline (without Mg ²⁺ and Ca ²⁺), pH 7.4, 150mM NaCl, 0.02% sodium azide and 50% glycerol.
Purification Method	The antibody was affinity-purified from rabbit antiserum by affinity-chromatography using epitope-specific immunogen.
Clonality	Polyclonal
Alias	Phosphatidylinositol N-acetylglucosaminyltransferase subunit H; Phosphatidylinositol-glycan biosynthesis class H protein; PIG-H;
Product Type	Polyclonal Antibody
Immunogen Species	Homo sapiens (Human)
Target Names	PIGH

Image



Immunohistochemistry analysis of paraffin-embedded human brain tissue using PIGH antibody.

Usage For Research Use Only. Not for use in diagnostic or therapeutic procedures.