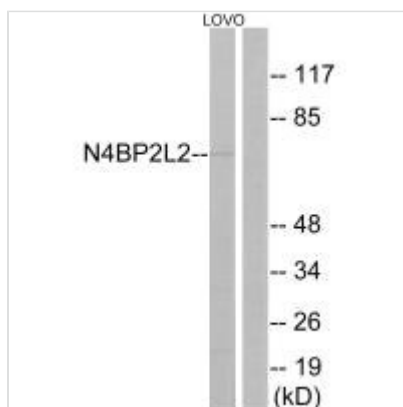




# N4BP2L2 Antibody

<b>Product Code</b>	CSB-PA548389
<b>Storage</b>	Upon receipt, store at -20°C or -80°C. Avoid repeated freeze.
<b>Uniprot No.</b>	Q92802
<b>Immunogen</b>	Synthesized peptide derived from internal of Human N4BP2L2.
<b>Raised In</b>	Rabbit
<b>Species Reactivity</b>	Human, Mouse
<b>Specificity</b>	The antibody detects endogenous levels of total N4BP2L2 protein.
<b>Tested Applications</b>	ELISA, WB; WB: 1:500-1:3000
<b>Form</b>	Rabbit IgG in phosphate buffered saline (without Mg <sup>2+</sup> and Ca <sup>2+</sup> ), pH 7.4, 150mM NaCl, 0.02% sodium azide and 50% glycerol.
<b>Purification Method</b>	The antibody was affinity-purified from rabbit antiserum by affinity-chromatography using epitope-specific immunogen.
<b>Clonality</b>	Polyclonal
<b>Alias</b>	NEDD4-binding protein 2-like 2; Phosphonoformate immuno-associated protein 5; N4BP2L2; CG005; PFAAP5
<b>Product Type</b>	Polyclonal Antibody
<b>Immunogen Species</b>	Homo sapiens (Human)
<b>Target Names</b>	N4BP2L2

## Image



Western blot analysis of extracts from LOVO cells, using N4BP2L2 antibody.

**Usage** For Research Use Only. Not for use in diagnostic or therapeutic procedures.