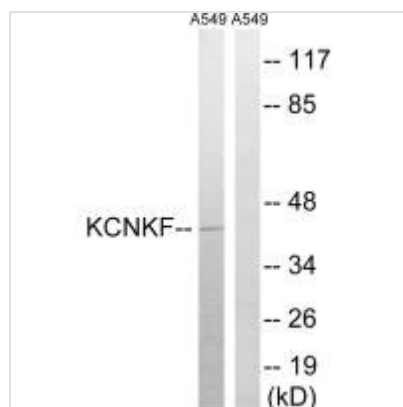




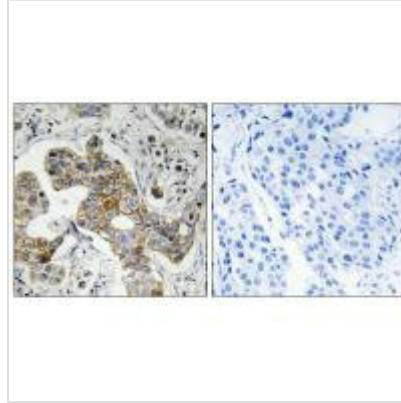
KCNK15 Antibody

Product Code	CSB-PA986151
Storage	Upon receipt, store at -20°C or -80°C. Avoid repeated freeze.
Uniprot No.	Q9H427
Immunogen	Synthesized peptide derived from internal of Human KCNK15.
Raised In	Rabbit
Species Reactivity	Human
Specificity	The antibody detects endogenous levels of total KCNK15 protein.
Tested Applications	ELISA, WB, IHC; WB: 1:500-1:3000, IHC: 1:50-1:100
Form	Rabbit IgG in phosphate buffered saline (without Mg ²⁺ and Ca ²⁺), pH 7.4, 150mM NaCl, 0.02% sodium azide and 50% glycerol.
Purification Method	The antibody was affinity-purified from rabbit antiserum by affinity-chromatography using epitope-specific immunogen.
Clonality	Polyclonal
Alias	Acid-sensitive potassium channel protein TASK-5; Potassium channel subfamily K member 15; TASK5; TWIK-related acid-sensitive K(+) channel 5; Two pore potassium channel KT3.3
Product Type	Polyclonal Antibody
Immunogen Species	Homo sapiens (Human)
Target Names	KCNK15

Image



Western blot analysis of extracts from A549 cells, using KCNK15 antibody.



Immunohistochemistry analysis of paraffin-embedded human breast carcinoma tissue using KCNK15 antibody.

Usage

For Research Use Only. Not for use in diagnostic or therapeutic procedures.