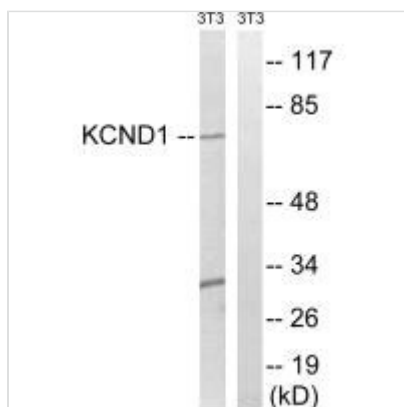




KCND1 Antibody

Product Code	CSB-PA798293
Storage	Upon receipt, store at -20°C or -80°C. Avoid repeated freeze.
Uniprot No.	Q9NSA2
Immunogen	Synthesized peptide derived from C-terminal of Human KCND1.
Raised In	Rabbit
Species Reactivity	Human, Mouse
Specificity	The antibody detects endogenous levels of total KCND1 protein.
Tested Applications	ELISA, WB; WB: 1:500-1:3000
Form	Rabbit IgG in phosphate buffered saline (without Mg ²⁺ and Ca ²⁺), pH 7.4, 150mM NaCl, 0.02% sodium azide and 50% glycerol.
Purification Method	The antibody was affinity-purified from rabbit antiserum by affinity-chromatography using epitope-specific immunogen.
Clonality	Polyclonal
Alias	KV4.1; potassium voltage-gated channel subfamily D member 1; potassium voltage-gated channel; Shal-related subfamily; member 1
Product Type	Polyclonal Antibody
Immunogen Species	Homo sapiens (Human)
Target Names	KCND1

Image



Western blot analysis of extracts from 3T3 cells, using KCND1 antibody.

Usage

For Research Use Only. Not for use in diagnostic or therapeutic procedures.